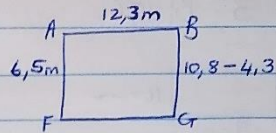


## WG 10

### Antwoorde van vorige werk

WG 10

Akt. 1 Bl. 185



$$\begin{aligned} 1. \text{ Oppervlak } ABGF &= l \times b \\ &= 12,3 \times 6,5 \\ &= 79,95 \text{ m}^2 \end{aligned}$$

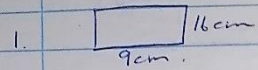
$$\begin{aligned} \text{Oppervlak } EGCD &= l \times b \\ &= 4,7 \times 4,3 \\ &= 20,21 \text{ m}^2 \end{aligned}$$

$$\begin{aligned} \text{Totale Oppervlak} &= ABGF + EGCD \\ &= 79,95 + 20,21 \\ &= 100,16 \text{ m}^2 \end{aligned}$$

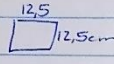
$$\begin{aligned} 2. \text{ Munisipale belasting } & R15,05 \text{ m}^2 \text{ per jaar} \\ \text{Koste per jaar (belasting)} &= R15,05 \times 100,16 \\ &= R1507,408 \\ &\approx R1507,41 \end{aligned}$$

$$\begin{aligned} \text{Maandelikse belasting} &= R1507,41 \div 12 \\ &= R125,62 \end{aligned}$$

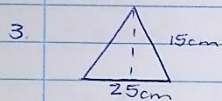
Oef. 3 Bl 186.



$$\begin{aligned}\text{Oppervlak} &= l \times b \\ &= 16 \times 9 \\ &= 144 \text{ cm}^2\end{aligned}$$

2.   $= s^2$

$$\begin{aligned}&= 12,5^2 \\ &= 156,25 \text{ cm}^2\end{aligned}$$



$$\begin{aligned}\text{Loodrechte hoogte} &= \sqrt{15^2 - 12,5^2} \text{ (pyth.)} \\ &= 8,29156 \dots \text{ cm}\end{aligned}$$

$$\begin{aligned}\therefore \text{Opp } \Delta &= \frac{1}{2} b \perp h \\ &= \frac{1}{2} (25)(8,2915 \dots) \\ &= 103,6 \text{ cm}^2\end{aligned}$$

4.  $DE = AF - BC$

$$= 65 - 39$$

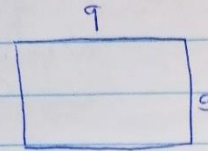
$$= 26 \text{ m}$$

$$\begin{aligned}\text{Opp } \square_a &= l \times b \\ &= 44 \times 39 \\ &= 1716 \text{ m}^2\end{aligned}$$


$$\begin{aligned}\text{Opp } \square_b^f &= l \times b \\ &= 26 \times 20 \\ &= 520 \text{ m}^2\end{aligned}$$

$$\begin{aligned}\text{Totale oppervlak} &= 1716 + 520 \\ &= 2236 \text{ m}^2\end{aligned}$$

5. opp



$$\begin{aligned}&= l \times b \\ &= 9 \times 5 \\ &= 45 \text{ m}^2\end{aligned}$$

Opp 

$$\begin{aligned}&= l \times b \\ &= 3 \times 1,5 \\ &= 4,5 \text{ m}^2\end{aligned}$$

$$\begin{aligned}\therefore \text{Opp } \square &= 45 \text{ m}^2 - 4,5 \text{ m}^2 \\ &= 40,5 \text{ m}^2\end{aligned}$$